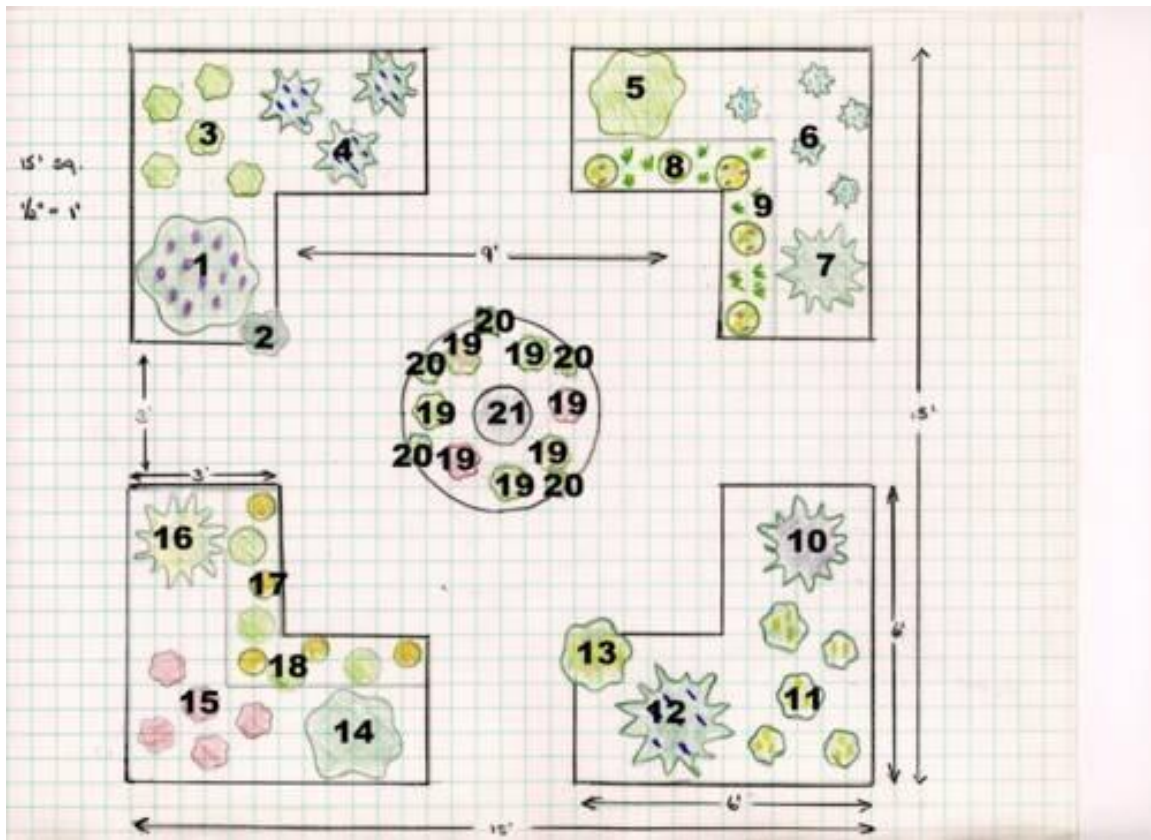


Formal Herb Garden Layout



1. **Lavender Bee Balm:** 'Petite Delight' - 12-15"H - zones:4-9 (3-5 plants)
2. **Thyme:** Common or English - zones:4-8 (1-3 plants)
3. **Cilantro:** 18"H - Direct-sow seed - Annual (5-7 plants)
4. **Lavender:** 'Munstead' - 18"H - zones:5-9 (1-3 plants)
5. **Lemon Balm :** 12-18"H - zones:4-9
6. **Borage :** 12-36" - Annual
7. **Tarragon :** 12-24" - zones:4-8
8. **Nasturtium :** 12"H - Direct-sow seed - Annual
9. **Chives :** 12-18"H - zones:3-9
10. **Purple Sage :** 24" - zones:4-10
11. **Dill :** 'Fernleaf' - 12-24" - Direct-sow seed - Annual
12. **Lavender:** 'Munstead' - 18"H - zones:5-9 (1-3 plants)
13. **Lemon Thyme:** 6"H - zones:5-10 (1-3 plants)
14. **Greek Oregano :** 18-24" - zones: 5-9
15. **Bronze Fennel:** 24-48" - zones: 4-9 (not usually long lived) (5-7 plants)
16. **Golden Variegated Sage:** 'Icterina' - 18-24" - zones: 5-10
17. **Calendula:** 18-24"H - Annual (4-6 plants)
18. **Parsley :** 'Flat-leaf Italian' - 18"H - Biennial (4-6 plants)
19. **Basil Assortment:** 6-30"H - Annual (5-9 plants)
20. **Chamomile:** 'German' - 6-12"- Annual / 'Roman' - Zones: 5-9
21. **Bird Bath**

Source: <http://gardening.about.com/od/gardendesignplans/ig/Formal-Herb-Garden-Design/Laying-Out-and-Herb-Garden.htm>